



120 Valley Court  
Oak Ridge, TN 37830  
Ph: 865-482-5717  
FAX: 865-482-1281  
zypcoatings.com

## Cera Glue GG

### Bonding Agent for Graphite Parts

Cera Glue GG is a fiber-free, ready-to-use, water-based, bonding glue for Graphite-to-Graphite or for bonding Silicon Carbide ceramics to one another. Cera Glue GG bonds parts together dramatically, creating a strong adhesive connection of the pieces. Apply glue to both faces to be bonded and place them together while still wet; then dry the pieces thoroughly at room temperature (i.e., overnight) and/or at 60 C. To achieve the bond, Cera Glue GG requires a one-time bake-on at  $\geq 800\text{ C}$  ( $\geq 1472\text{ F}$ ) for  $\frac{1}{2}$  hour.

#### Key Attributes

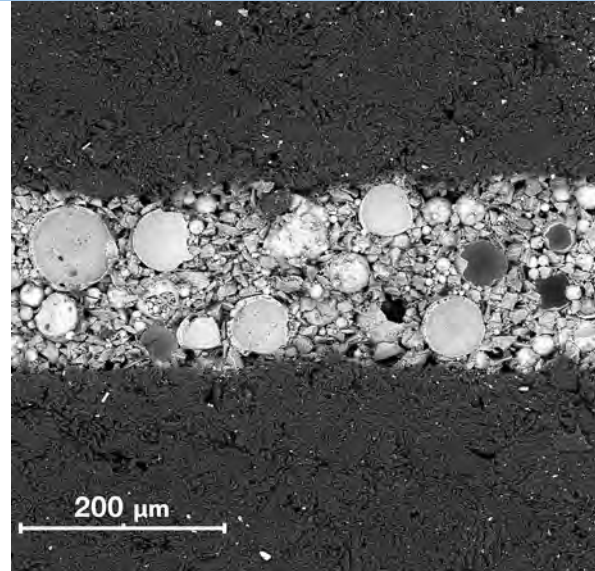
- Specifically designed for Graphite-to-Graphite or for SiC-SiC
- Usable to nearly 1000 C in air
- Protects Graphite from oxidation
- High Emissivity
- Withstands cyclic use
- Contains no RCF (Refractory Ceramic Fiber)
- Water-based – easy cleanup

#### Ideal Use

- Bonding parts that would be difficult to make as monolithic
- Glue-repair of broken or chipped Graphite or SiC parts
- Sealing surfaces, fissures, gaps

#### Use Notes

1. DO NOT DILUTE.
2. Stir vigorously before use: this thins out the paste for troweling.
3. Remove any surface contamination on the parts to be glued.
4. Apply the glue with putty knife or trowel onto the surfaces to be bonded.
5. While wet, press the parts together.
6. Allow the glue to dry at room temperature or in a drier at 60 C until thoroughly dry.
7. Heat up to 800-850 C for  $\frac{1}{2}$  to 1 hour to “set” the bond.
8. The glued part(s) can be regularly used to  $\geq 800\text{ C}$ .



SEM Image of Graphite to Graphite Bond

#### Specifications

Active Ingredients	Alpha Silicon Carbide, Glass
Max Use Temperature with All Atmospheres	1000 C (1832 F)
Fired Composition	SiC + Glass + Proprietary Binders
Liquid Carrier	Water
Color	Gray
Viscosity	Thick paste: not determined
Shelf Life (months)	>12
Coating pH	2-3
H F R Ratings	1-1-0
Substrate Use	Graphite or Silicon Carbide

#### Sizes and colors

Standard Size: 8 oz. (237 ml) container  
Cera Glue GG is a gray colored glue.

#### Safety Information

- Consult SDS before use.
- For industrial use only

ZYP Coatings, Inc. (ZYP) makes no warranties, express or implied, including the warranty of merchantability or fitness for a particular service. Product is for industrial/commercial use only. Users should determine suitability for their use. In no event will ZYP be liable for any direct, indirect, incidental, special or consequential damages or losses including, but not limited to loss of profits, in any way related to this product regardless of the legal theory asserted.