



120 Valley Court
 Oak Ridge, TN 37830
 Ph: 865-482-5717
 FAX: 865-482-1281
 zypcoatings.com

Cera Glue AA

A Superior High-Temperature Bonding Agent for Alumina Parts

Cera Glue AA is a fiber-free, ready-to-use, water-based, high-temperature-use (up to nearly 1500 C [2732 F]) bonding glue for Alumina-to-Alumina or for bonding high-Alumina content ceramics to one another. Cera Glue bonds parts together dramatically, creating a strong adhesive connection of the pieces. Also this glue can be used with dense or porous surfaces: just apply two coats to both faces to be bonded, drying between each coating at room temperature or at 60 C, followed by heating up to at least 1500 C in any atmosphere for around ½-2 hours. NOTE that this product DOES NOT contain Boron Nitride.

Key Attributes

- Specifically designed for Alumina-to-Alumina or for high-Alumina parts
- Usable to nearly 1500 C, higher than other bonding agents
- Glue is highly stable/unreactive with many materials – even molten ones
- Provides very strong joining of parts
- YAG (YAG, $3Y_2O_3 \cdot 5Al_2O_3$) based, phosphate-refractory bonded
- Contains no RCF (Refractory Ceramic Fiber)
- Water-based – easy cleaning and diluting if needed

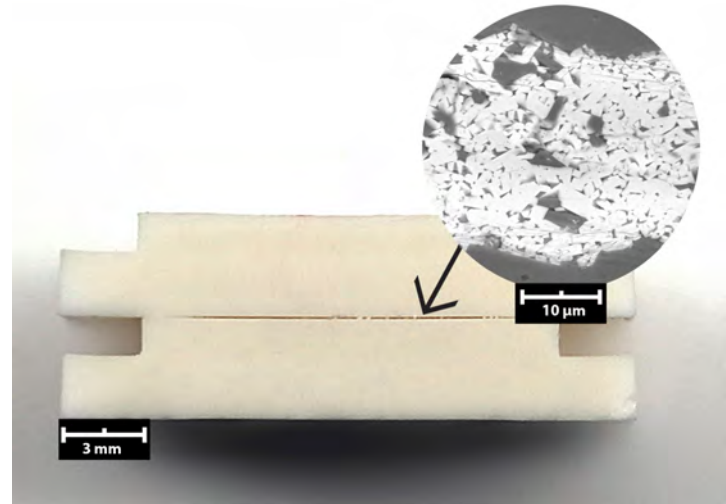
Ideal Use

- Bonding parts
- Glue-repair of broken or chipped ceramic/refractory parts
- Hermetically sealing tubes and bonded parts
- Creating large complex parts from separately sintered components

Use Notes

1. Remove any surface oil, dust, grease, scale, or other coating.
2. Shake the container vigorously until the mixing ball is loosened and the glue is evenly resuspended and liquid appearing.
3. Paint one layer onto both sides of the area to be bonded; allow to dry at room temperature or at 60 C and then apply a second layer.
4. Place the parts together and heat up to 1500 C in any atmosphere and 'soak' for ½ to 2 hours or more.

Prewetting the areas with water is not necessary, but may be helpful on very porous refractories to prevent excessive drying of the glue.



Specifications

Active Ingredients	Proprietary Refractory Materials with Yttrium Aluminate ($YAG, 3Y_2O_3 \cdot 5Al_2O_3$)
Max Use Temperature with All Atmospheres	Nearly 1500 C (2732 F)
Fired Composition	Mixed Oxides, with YAG primary phase
Liquid Carrier	Water
Binder Phase	Stable refractory with phosphate
BN Level	None
Specific Gravity	1.52
Color	Grayish White
Brookfield Viscosity (cps)	400 @2/60
Shelf Life (months)	>12
Coating pH	2
H F R Ratings	1-0-0
Substrate Use	Alumina and high-Alumina refractories

Sizes and colors

Standard Size: 8 oz. (237 ml) container
 Cera Glue AA is a grayish white colored glue.

Safety Information

- Consult SDS before use.
- For industrial use only

ZYP Coatings, Inc. (ZYP) makes no warranties, express or implied, including the warranty of merchantability or fitness for a particular service. Product is for industrial/commercial use only. Users should determine suitability for their use. In no event will ZYP be liable for any direct, indirect, incidental, special or consequential damages or losses including, but not limited to loss of profits, in any way related to this product regardless of the legal theory asserted.