



120 Valley Court  
Oak Ridge, TN 37830  
Ph: 865-482-5717  
FAX: 865-482-1281  
zypcoatings.com

# Cera Glue® BondCoat

## Glue/Bond Mixture for High-Temperature Ceramic Components

Cera Glue® BondCoat is a water-based paste that can glue/bond high-temperature ceramics, such as high-density Zirconium Dioxide and Silicon Carbide, as well as Boron Nitride. This product requires a one-time bake-on/bonding heat treatment at 1300-1500 C for 1/2 to 1 hour in an atmosphere compatible with the material being bonded (i.e., air, nitrogen, argon, etc.).

### Key Attributes

- Bonds dense refractory ceramic of ZrO<sub>2</sub>, SiC, BN
- Bonded material can be used at temperatures up to the bonding heat-treatment temperature
- The bond/glue is stable with many materials and provides very strong joining of parts
- Applies smoothly and spreads easily
- Safe, water-based

### Ideal Use

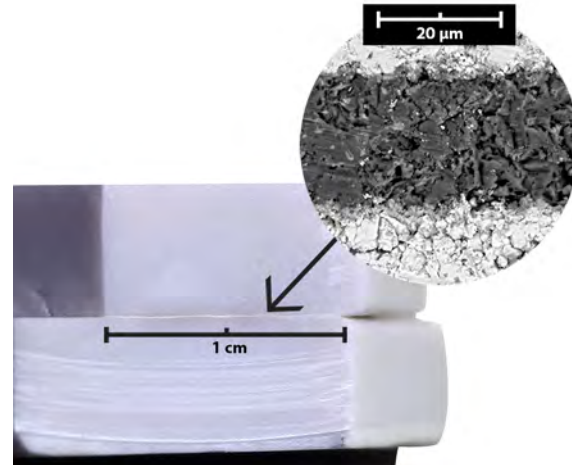
- Gluing dense refractory ceramic pieces
- Joining parts, such as 3D printed pieces, into complex structures
- Sealing 'gaps' and fissures

### Use Notes

1. DO NOT DILUTE.
2. Re-suspend until uniform.
3. Apply one layer of coating to each face to be bonded and press together while still wet. Allow the bond layer to thoroughly dry.
4. Heat up to 1300-1500 C for 1/2 to 1 hour to fully bond the surface.
5. The bonded ceramic assembly is now ready for use to the bonding temperature.

### Safety Information

- Consult SDS before use.
- For industrial use only



### Specifications

Active Ingredients	Proprietary Refractory Materials
Max Use Temperature with All Atmospheres	>=1500 C (2732 F)
Fired Composition	Proprietary
Liquid Carrier	Water
Binder Phase	Stable refractory mixture
Specific Gravity	1.6
Color	White
Brook-field Viscosity	Thick paste; not determined
Shelf Life (months)	>12
Coverage (ft <sup>2</sup> /gal.)	50-200
Coating pH	4
H F R Ratings	1-0-0
Substrate Use	High-temperature Ceramics

- After one-time heat-treatment to bond the pieces, they can be overcoated with any of our many specialty coatings, if so desired.

### Sizes and colors

Standard Size: 8 oz. (237 ml) container  
Cera Glue BondCoat is a white colored glue.

### CAUTION: DO NOT CONTACT WET COATINGS WITH MOLTEN METAL.

ZYP Coatings, Inc. (ZYP) makes no warranties, express or implied, including the warranty of merchantability or fitness for a particular service. Product is for industrial/commercial use only. Users should determine suitability for their use. In no event will ZYP be liable for any direct, indirect, incidental, special or consequential damages or losses including, but not limited to loss of profits, in any way related to this product regardless of the legal theory asserted.